

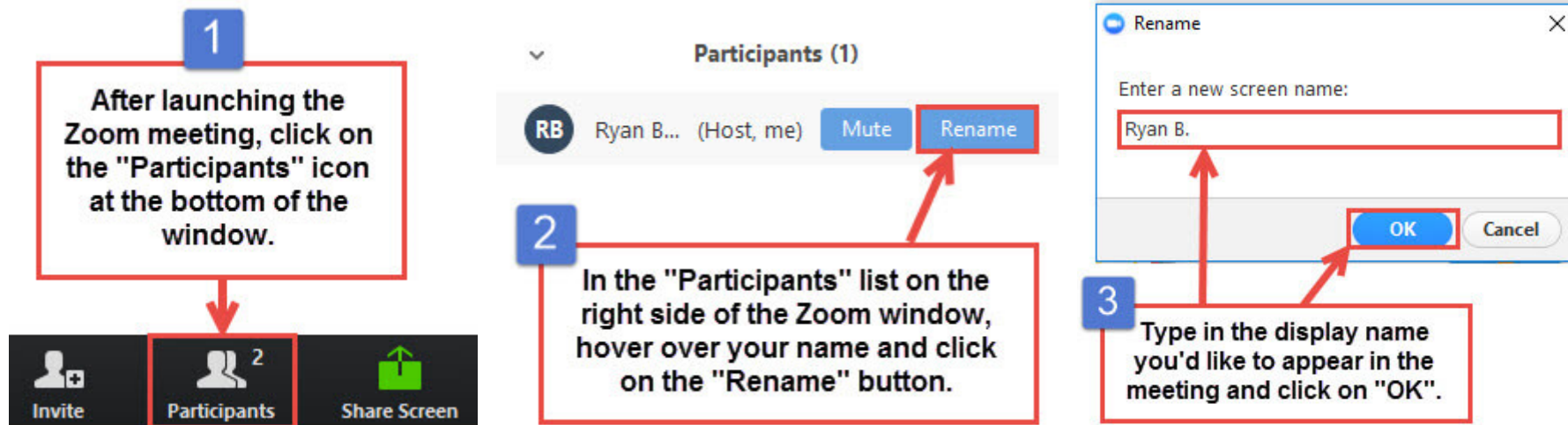
Comprehensive and Team-Based Care Learning Collaborative

Session 8: Wednesday June 11th, 2025

This project is supported by the Health Resources and Services Administration (HRSA) of the U.S. Department of Health and Human Services (HHS) as part of an award totaling \$550,000 with 0% financed with non-governmental sources. The contents are those of the author(s) and do not necessarily represent the official views of, nor an endorsement, by HRSA, HHS, or the U.S. Government. For more information, please visit [HRSA.gov](https://www.hrsa.gov).

Get the Most Out of Your Zoom Experience

- Please keep yourself on MUTE to avoid background/distracting sounds
- Use the CHAT function or UNMUTE to ask questions or make comments
- Please change your participant name to your full name and organization
 - “Meaghan Angers CHCI”



Agenda

- 1:00-1:10pm Welcome
- 1:10-2:00pm Showcase Presentations
- 2:00-2:30pm Questions, Wrap-Up, and Evaluation

Learning Collaborative Faculty

Tom Bodenheimer, MD

- Physician and Founding Director,
Center for Excellence in Primary Care

Deborah Ward, RN

- Quality Improvement Consultant

Kathleen Thies, PhD, RN

- Consultant, Researcher

Margaret Flinter, APRN, PhD, FAAN

- Co-PI, NTTAP
- CHCI's Senior Vice President/Clinical
Director

Amanda Schiessl, MPP

- Chief of Staff, MWHS
- Co-PI & Project Director, NTTAP

Meaghan Angers

- Senior Program Manager, NTTAP

Bianca Flowers

- Program Manager, NTTAP

**MORE THAN
WHAT WE DO.
IT'S WHO WE
DO IT FOR.**



We are a first-of-our-kind system of affiliates brought together by a common goal: To solve health inequity for the most underserved communities among us. Through primary care, education and policy, we've already bridged the gap for over 5 million people. And we're just getting started.



Learn More at mwhs1.com



MOSES/WEITZMAN Health System

Always groundbreaking. Always grounded.

Community Health Center, Inc.

A leading Federally Qualified Health Center based in Connecticut.

ConferMED

A national eConsult platform improving patient access to specialty care.

The Consortium for Advanced Practice Providers

A membership, education, advocacy, and accreditation organization for APP postgraduate training.

National Institute for Medical Assistant Advancement

An accredited educational institution that trains medical assistants for a career in team-based care environments.

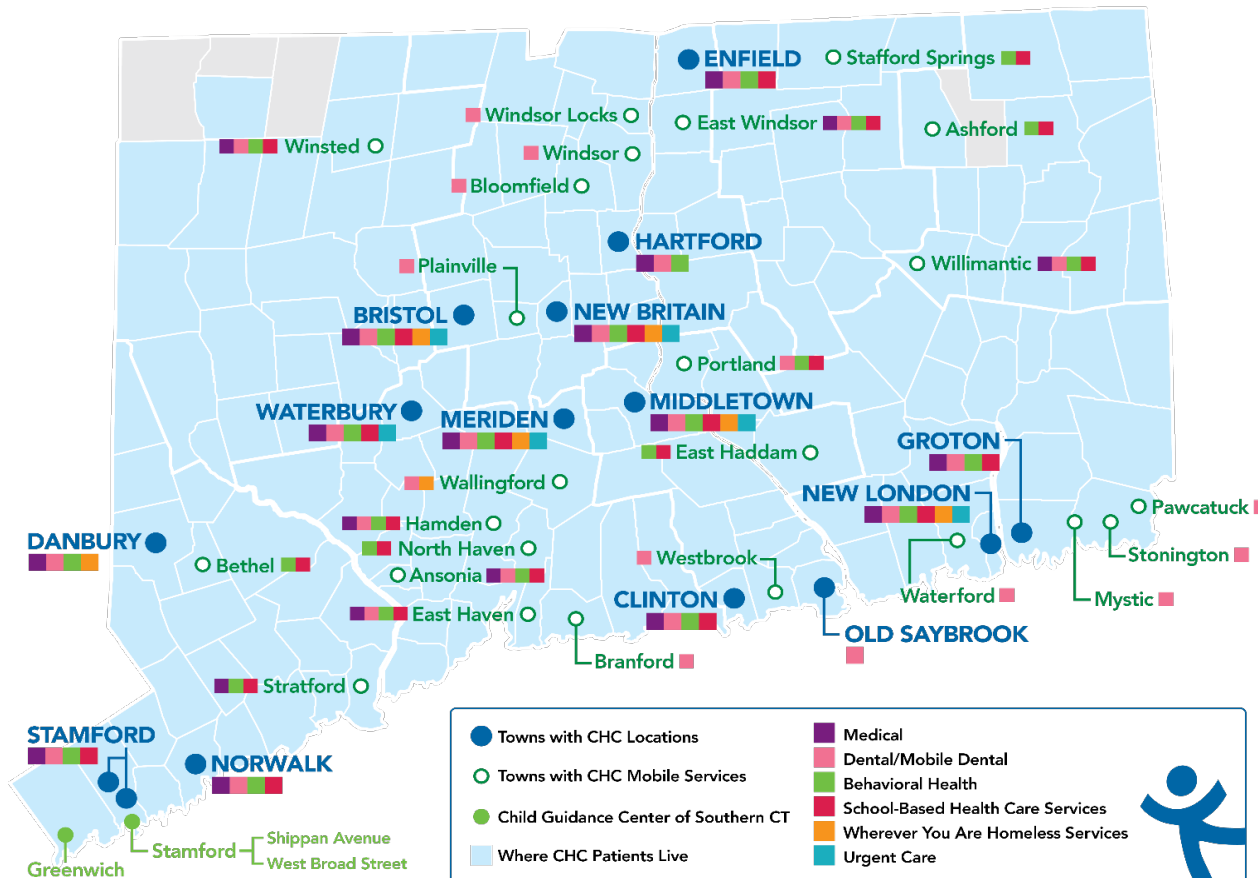
The Weitzman Institute

A center for innovative research, education, and policy.

Center for Key Populations

A health program with international reach, focused on the most vulnerable among us.

Locations & Service Sites



THREE FOUNDATIONAL PILLARS

1	2	3
Clinical Excellence	Research and Development	Training the Next Generation

Overview

- Founded: May 1, 1972
- Staff: 1,400
- Active Patients: 150,000
- Patients CY: 107,225
- SBHCs across CT: 152

Year	2021	2022	2023
Patients Seen	99,598	102,275	107,225

National Training and Technical Assistance Partners (NTTAP) Clinical Workforce Development

Provides free training and technical assistance to health centers across the nation through national webinars, activity sessions, trainings, publications, and more!

To learn more, visit <https://www.weitzmaninstitute.org/nca>

This project is supported by the Health Resources and Services Administration (HRSA) of the U.S. Department of Health and Human Services (HHS) as part of an award totaling \$550,000 with 0% financed with non-governmental sources. The contents are those of the author(s) and do not necessarily represent the official views of, nor an endorsement, by HRSA, HHS, or the U.S. Government. For more information, please visit HRSA.gov.

Learning Collaborative Structure

- Eight 90-minute Learning Collaborative video conference sessions
- Weekly 60-minute calls between mentors and team leader
- Internal team workgroup meetings
- Access resources via the [Weitzman Education Platform](#)
- Use [Google Drive](#) to share your work

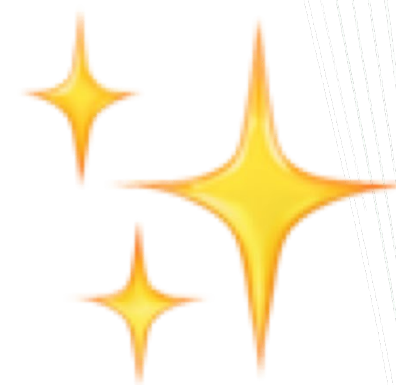
Learning Session Dates	
Learning Session 1	Wednesday November 13 th
Learning Session 2	Wednesday December 11 th
Learning Session 3	Wednesday January 8 th
Learning Session 4	Wednesday February 12 th
Learning Session 5	Wednesday March 12 th
Learning Session 6	Wednesday April 9 th
Learning Session 7	Wednesday May 14 th
Learning Session 8	Wednesday June 11 th

2024-2025 Cohort

Cherry Health	Grand Rapids, Michigan
Chestnut Family Health Center	Bloomington, Illinois
Community Health & Wellness Center of Greater Torrington	Torrington, Connecticut
Community Health Service Inc.	Moorhead, Minnesota
Complete Health DBA Community Health Center of Black Hills, Inc.	Rapid City, South Dakota
Excelth Inc.	New Orleans, Louisiana
HCCH Medical Clinics (Harrison County Community Hospital)	Bethany, Missouri
North Shore Community Health Inc.	Salem, Massachusetts
Primary Health Network	Sharon, Pennsylvania



Showcase Presentations!



Showcase Objectives

- Tell the story of your health center's work during this learning collaborative in a clean, crisp, visual format
- Generate reflection among you and the other team members about your involvement in this learning collaborative
- Share your work in future meetings with other health center staff including leadership and external stakeholders such as the health center board, community partners, and funders

Showcase Order

- 1:10-1:20pm Cherry Health
- 1:20-1:30pm Complete Health
- 1:30-1:40pm EXCELth Primary Care Network
- 1:40-1:50pm North Shore Community Health
- 1:50-2:00pm Primary Health Network

Questions?

Wrap-Up

Next Steps

Due Friday June 27th:

- Submit all completed/drafted work to the [Google Drive](#)
- Complete the Post-Collaborative Surveys
 - Each team member, please complete the [Post-Collaborative Evaluation Survey](#)
 - As a team, please complete the [Primary Care Team Guide Self-Assessment](#)
 - Ask the team leader(s) to complete the [Team Leader Self-Assessment Skills](#)
 - Ask each team member to complete the [Team Member Self-Assessment Skills](#)

Reminders

- **Final Team Leader Check-In:** Wednesday June 18th from 1:00-2:00pm Eastern / 10:00-11:00am Pacific
- **3-month Check-in Call:** Wednesday September 17th from 1:00-2:00pm Eastern / 10:00-11:00am Pacific
- Please reach out to schedule 1-on-1 calls as needed about your team-based care efforts!

Weitzman Education Platform

Weitzman Education Platform – this will serve as the platform to receive CE credits for each learning session and access recordings/slide decks/resources:

- Register for the course here: <https://education.weitzmaninstitute.org/content/nttap-comprehensive-and-team-based-care-learning-collaborative-2024-2025>
- Access Code: TBC2024
- If you do not have an account, follow these instructions:
<https://education.weitzmaninstitute.org/user/register>
 - Choose a username, password (save it somewhere safe so you can continue to use it!), and fill out some basic user information.
 - Click Create New Account.
 - If you encounter any technical difficulties, please reach out to myself or submit a ticket.

Explore more resources!

National Learning Library: Resources for Clinical Workforce Development

National Learning Library



CHC has curated a series of resources, including webinars to support your health center through education, assistance and training.

[Learn More](#)

CLINICAL WORKFORCE DEVELOPMENT Transforming Teams, Training the Next Generation

The National Training and Technical Assistance Cooperative Agreements (NCAs) provide free training and technical assistance that is data driven, cutting edge and focused on quality and operational improvement to support health centers and look-alikes. Community Health Center, Inc. (CHC, Inc.) and its Weitzman Institute specialize in providing education and training to interested health centers in Transforming Teams and Training the Next Generation through;

National Webinars on advancing team based care, implementing post-graduate residency training programs, and health professions student training in FQHCs.

Invited participation in Learning Collaboratives to advance team based care or implement a post-graduate residency training program at your health center.

Please keep watching this space for information on future sessions. To request technical assistance from our NCA, please email NCA@chc1.com for more information.

<https://www.weitzmaninstitute.org/ncaresources>

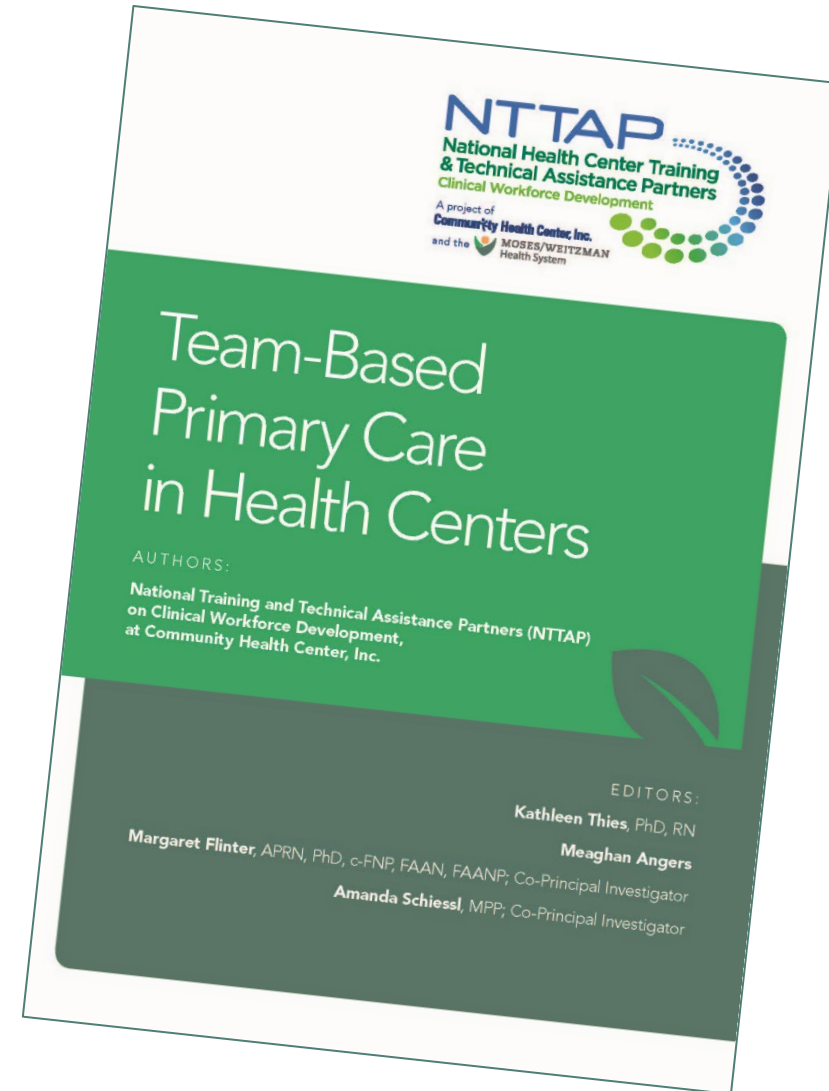
Health Center Resource Clearinghouse



<https://www.healthcenterinfo.org/>

Download our new book,
*Team-Based Primary Care in
Health Centers!*

<https://www.weitzmaninstitute.org/wp-content/uploads/2024/09/Team-BasedPrimaryCareinHealthCenters.pdf>



Contact Us!

Amanda Schiessl

Program Director/Co-PI

Amanda@mwhs1.com

Meaghan Angers

Senior Program Manager

angersm@mwhs1.com

Bianca Flowers

Program Manager

flowerb@mwhs1.com

REMINDER: Complete evaluation in the poll!