

Comprehensive and Team-Based Care Community of Practice (CoP)

Session Eight: June 3rd, 2026

This project is supported by the Health Resources and Services Administration (HRSA) of the U.S. Department of Health and Human Services (HHS) as part of an award totaling \$550,000 with 0% financed with non-governmental sources. The contents are those of the author(s) and do not necessarily represent the official views of, nor an endorsement, by HRSA, HHS, or the U.S. Government. For more information, please visit [HRSA.gov](https://www.hrsa.gov).

Get the Most Out of Your Zoom Experience

- Please keep yourself on MUTE to avoid background/distracting sounds
- Use the CHAT function or UNMUTE to ask questions or make comments
- Please change your participant name to your full name and organization
 - “Meaghan Angers CHCI”

1
After launching the Zoom meeting, click on the "Participants" icon at the bottom of the window.

2
In the "Participants" list on the right side of the Zoom window, hover over your name and click on the "Rename" button.

3
Type in the display name you'd like to appear in the meeting and click on "OK".

Session Agenda

- 1:00-1:05pm Welcome
- 1:05-2:15pm Showcase Presentations
- 2:15-2:30pm Wrap-Up

Community of Practice (CoP) Faculty

Tom Bodenheimer, MD

- Physician and Founding Director,
Center for Excellence in Primary Care

Deborah Ward, RN

- Quality Improvement Consultant

Kathleen Thies, PhD, RN

- Consultant, Researcher

Margaret Flinter, APRN, PhD, FAAN

- Co-PI, NTTAP
- CHCI's Senior Vice President/Clinical
Director

Amanda Schiessl, MPP

- Chief of Staff, MWHS
- Co-PI & Project Director, NTTAP

Meaghan Angers

- Senior Program Manager, NTTAP

Bianca Flowers

- Program Manager, NTTAP

**MORE THAN
WHAT WE DO.
IT'S WHO WE
DO IT FOR.**



Learn More at mwhs1.com



MOSES/WEITZMAN Health System

Always groundbreaking. Always grounded.

Community Health Center, Inc.

A leading Federally Qualified Health Center based in Connecticut.

CeCN

A national eConsult platform improving patient access to specialty care.

The Consortium for Advanced Practice Providers

A membership, education, advocacy, and accreditation organization for APP postgraduate training.

National Institute for Medical Assistant Advancement

An accredited educational institution that trains medical assistants for a career in team-based care environments.

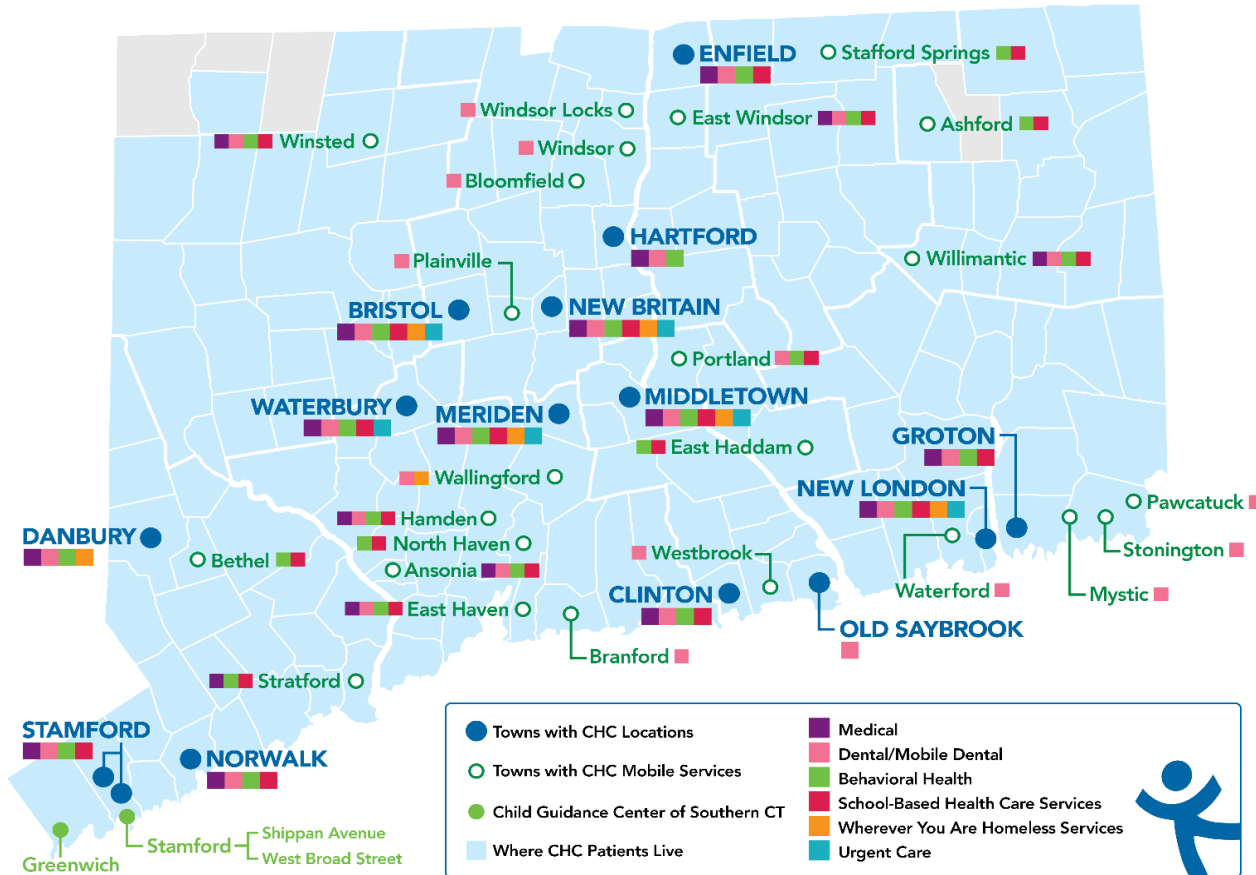
The Weitzman Institute

A center for innovative research, education, and policy.

Center for Key Populations

A health program with international reach, focused on the most vulnerable among us.

Locations & Service Sites



Overview

- Founded: May 1, 1972
- Staff: 1,400
- Active Patients: 150,000
- Patients CY: 107,225
- SBHCs across CT: 152

Year	2022	2023	2024
Patients Seen	102,275	104,917	107,225



National Training and Technical Assistance Partners (NTTAP) Clinical Workforce Development

Provides **free** training and technical assistance to federally funded health centers and look-alikes across the nation through webinars, activity sessions, communities of practice, trainings, publications, and more!

To learn more, please visit <https://www.weitzmaninstitute.org/nca>.

2025-2026 Cohort

Brooklyn Plaza Medical Center, Inc.	Brooklyn, New York
Community Access Network	Lynchburg, Virginia
Community Health and Dental Care (CHDC)	Pottstown, Pennsylvania
Excelth Inc.	New Orleans, Louisiana
Genesis Family Health DBA United Methodist Western	Garden City, Kansas
Ho-Chunk Health Care Center	Black River Falls, Wisconsin
Lyon-Martin Community Health Services	San Francisco, California
Morris Heights Health Center	Bronx, New York
New Hanover Community Health Center DBA MedNorth Health Center	Wilmington, North Carolina
Promise Healthcare	Champaign, Illinois
Total Health Care	Baltimore, Maryland
The Wright Center for Community Health	Scranton, Pennsylvania

CoP Structure

- Eight 90-minute learning sessions
- Weekly 60-minute team leader check-in calls
- Internal health center team meetings
- Access resources via the [Weitzman Education Platform](#)
- Use [Google Drive](#) to share your work

Learning Session Dates	
Learning Session 1	Wednesday November 5 th
Learning Session 2	Wednesday December 3 rd
Learning Session 3	Wednesday January 14 th
Learning Session 4	Wednesday February 4 th
Learning Session 5	Wednesday March 4 th
Learning Session 6	Wednesday April 1 st
Learning Session 7	Wednesday May 6 th
Learning Session 8	Wednesday June 3 rd



Showcase Presentations!



Showcase Objectives

- Tell the story of your health center's work during this community of practice (CoP) in a clean, crisp, visual format
- Generate reflection among you and the other team members about your involvement in this CoP
- Share your work in future meetings with other health center staff including leadership and external stakeholders such as the health center board, community partners, and funders

Showcase Order

- 1:05-1:15pm Morris Heights Health Center
- 1:15-1:25pm Community Health and Dental Care (CHDC) – Kidney Health
- 1:25-1:35pm Community Health and Dental Care (CHDC) – Pediatric Immunizations
- 1:35-1:45pm Community Access Network
- 1:45-1:55pm EXCELth Primary Care Network
- 1:55-2:05pm MedNorth Health Center
- 2:05-2:15pm Total Health Care

Questions?

Wrap-Up

Next Steps

Due Friday June 19th:

- Submit all completed/drafted work to the Google Drive
- Complete the Post-Collaborative Surveys
 - Each team member, please complete the Post-Collaborative Evaluation Survey
 - As a team, please complete the Primary Care Team Guide Self-Assessment
 - Ask the team leader(s) to complete the Team Leader Self-Assessment Skills
 - Ask each team member to complete the Team Member Self-Assessment Skills

Reminders

- **Final Team Leader Check-In:** Wednesday June 10th from 1:00-2:00pm Eastern / 10:00-11:00am Pacific
- Please reach out to schedule 1-on-1 calls as needed about your team-based care efforts!

Weitzman Education Platform

Weitzman Education Platform – this will serve as the platform to receive CE credits for each learning session and access recordings/slide decks/resources:

- Register for the course here: <https://education.weitzmaninstitute.org/content/nttap-comprehensive-and-team-based-care-learning-collaborative-2024-2025>
- Access Code: TBC2025
- If you do not have an account, follow these instructions:
<https://education.weitzmaninstitute.org/user/register>
 - Choose a username, password (save it somewhere safe so you can continue to use it!), and fill out some basic user information.
 - Click Create New Account.
 - If you encounter any technical difficulties, please reach out to myself or submit a ticket.

Explore more resources!

National Learning Library: Resources for Clinical Workforce Development

National Learning Library



CHC has curated a series of resources, including webinars to support your health center through education, assistance and training.

[Learn More](#)

<https://www.weitzmaninstitute.org/ncaresources>



The National Training and Technical Assistance Cooperative Agreements (NCAs) provide free training and technical assistance that is data driven, cutting edge and focused on quality and operational improvement to support health centers and look-alikes. Community Health Center, Inc. (CHC, Inc.) and its Weitzman Institute specialize in providing education and training to interested health centers in Transforming Teams and Training the Next Generation through:

National Webinars on advancing team based care, implementing post-graduate residency training programs, and health professions student training in FQHCs.

Invited participation in Learning Collaboratives to advance team based care or implement a post-graduate residency training program at your health center.

Please keep watching this space for information on future sessions. To request technical assistance from our NCA, please email NCA@chc1.com for more information.

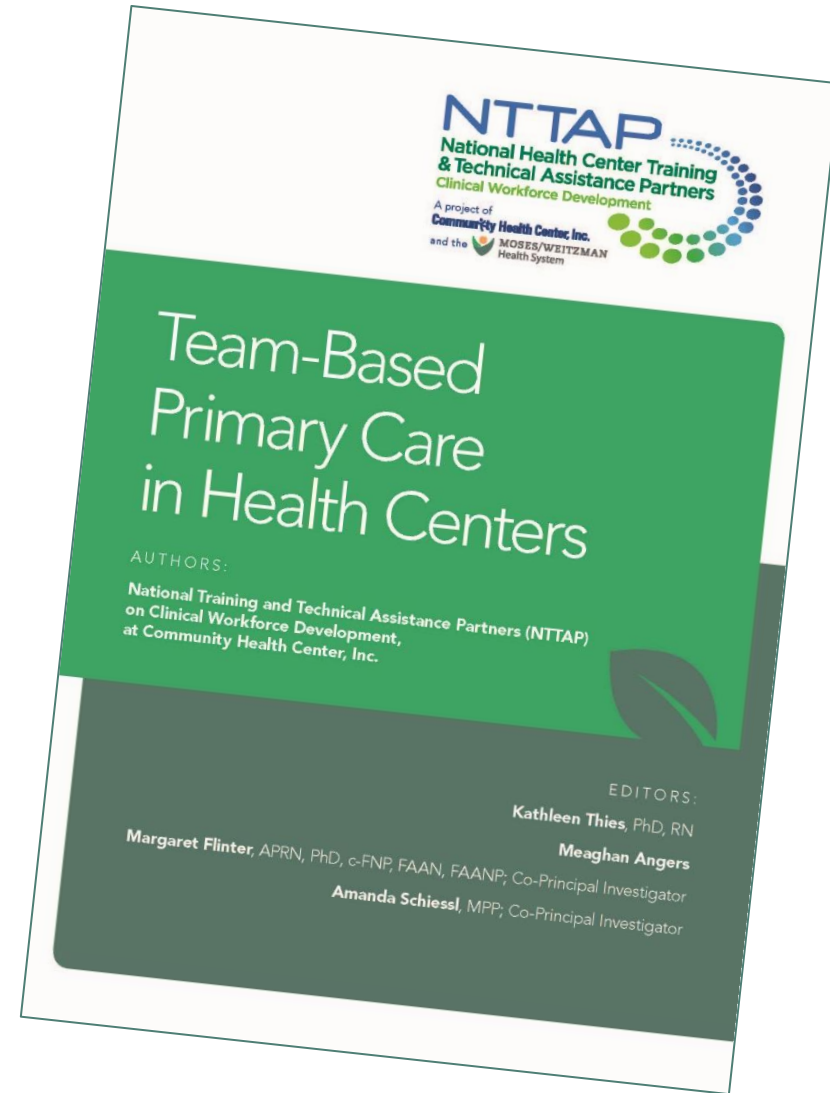
Health Center Resource Clearinghouse



<https://www.healthcenterinfo.org/>

Download our new book,
Team-Based Primary Care in Health Centers!

<https://www.weitzmaninstitute.org/wp-content/uploads/2024/09/Team-BasedPrimaryCareinHealthCenters.pdf>





MOSES/WEITZMAN
Health System

The Weitzman Institute wants to hear from FQHC healthcare providers and staff about their knowledge and opinions on HPV self-sampling for cervical cancer screening.

Your feedback will directly shape an implementation guide designed to bring this screening option to community health centers.

Scan here to take our survey!



Contact Us!

Amanda Schiessl

Program Director/Co-PI

Amanda@mwhs1.com

Meaghan Angers

Senior Program Manager

angersm@mwhs1.com

Bianca Flowers

Program Manager

flowerb@mwhs1.com

REMINDER: Complete evaluation in the poll!